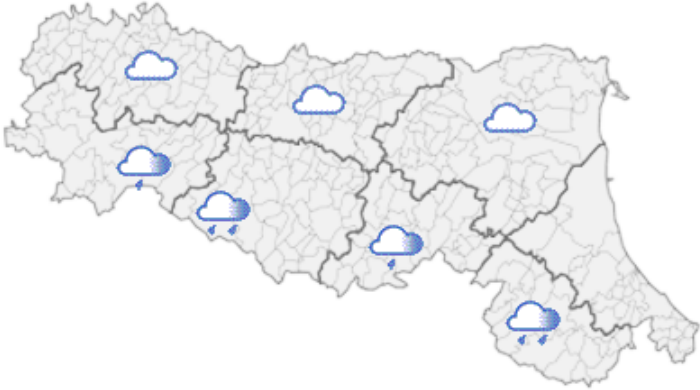






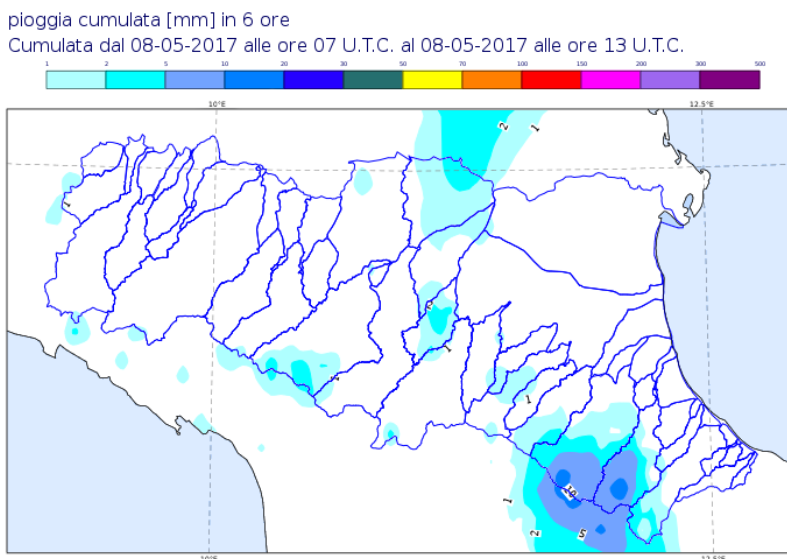


DOCUMENTO N.	DATA EMISSIONE	INIZIO VALIDITA'	FINE VALIDITA'
001/2017/01	08/05/2017 17:47	08/05/2017 16:19	08/05/2017 16:19

PREVISIONE METEOROLOGICA PER LE PROSSIME ORE	LEGENDA PREVISIONE
	<ul style="list-style-type: none"> <li> Pioggia trascurabile (&lt;2 mm / 6h)</li> <li> Pioggia debole (5-10 mm / 6h)</li> <li> Pioggia moderata (10-30 mm / 6h)</li> <li> Pioggia elevata (&gt;30 mm / 6h)</li> <li> Pioggia mista a neve</li> <li> Neve</li> </ul>

precipitazioni a carattere di rovescio temporalesco sul settore appenninico; valori stimati dal radar localmente superiori a 40mm/h (intensità oraria di precipitazione), nelle province di Parma e Forlì Cesena, Nelle prossime ore prevista stazionarietà dei fenomeni.

**PIOGGIA OSSERVATA NELLE ULTIME 6 ORE**



Il Dirigente Referente Centro Funzionale

Tiziana Paccagnella

Firma autografa omessa ai sensi dell'art.3, c.2, D.Lgs.  
12/02/1993, n.39