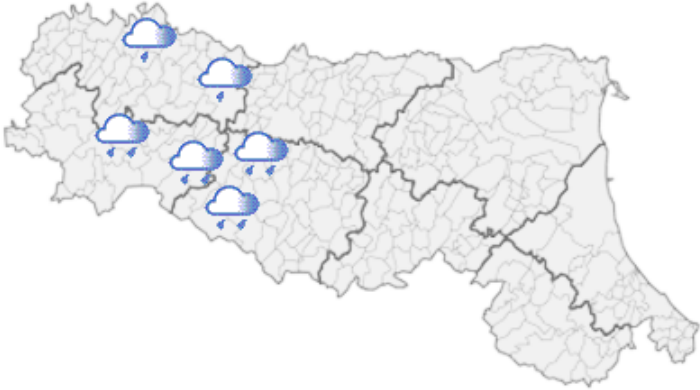






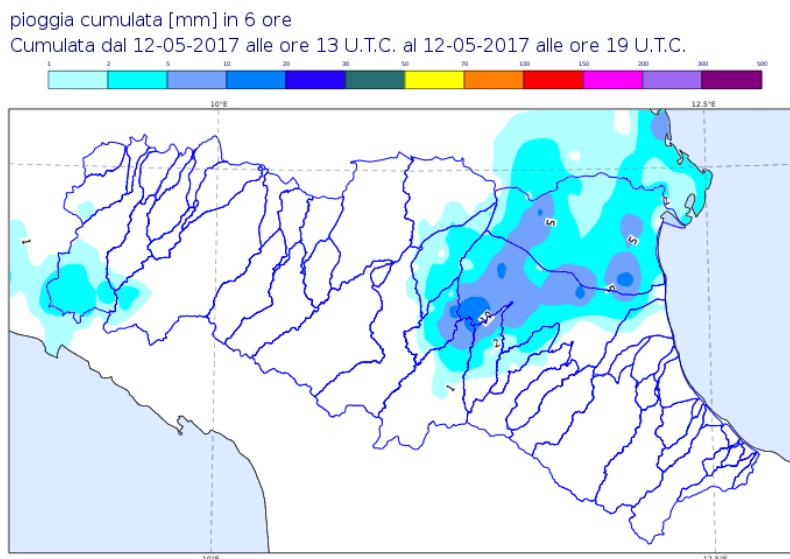


DOCUMENTO N.	DATA EMISSIONE	INIZIO VALIDITA'	FINE VALIDITA'
002/2017/06	12/05/2017 22:08	12/05/2017 22:01	12/05/2017 23:00

PREVISIONE METEOROLOGICA PER LE PROSSIME ORE	LEGENDA PREVISIONE
	<ul style="list-style-type: none">  Pioggia trascurabile (<2 mm / 6h)  Pioggia debole (5-10 mm / 6h)  Pioggia moderata (10-30 mm / 6h)  Pioggia elevata (>30 mm / 6h)  Pioggia mista a neve  Neve

Celle temporalesche stazionarie sui rilievi occidentali e deboli fenomeni sulla pianura adiacente.

PIOGGIA OSSERVATA NELLE ULTIME 6 ORE



Il Dirigente Referente Centro Funzionale

Marco Deserti

Firma autografa omessa ai sensi dell'art.3, c.2, D.Lgs.
12/02/1993, n.39