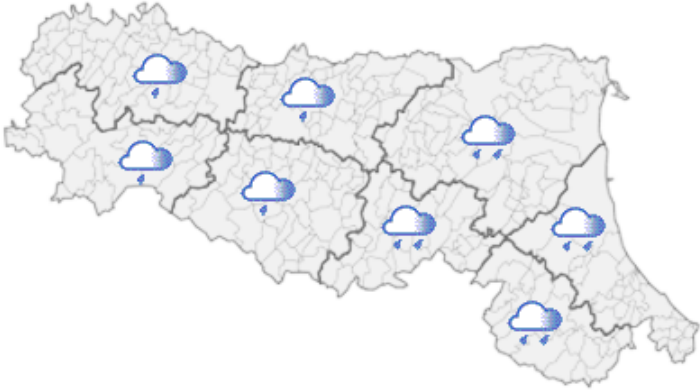






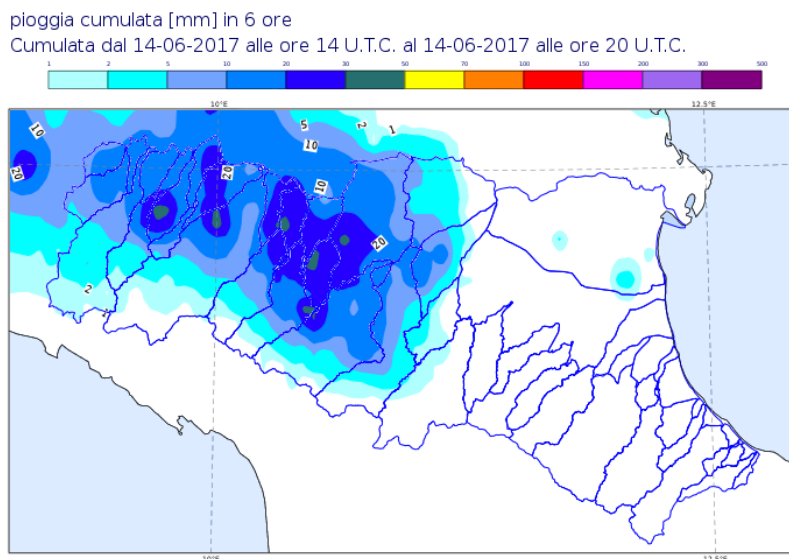


DOCUMENTO N.	DATA EMISSIONE	INIZIO VALIDITA'	FINE VALIDITA'
003/2017/02	14/06/2017 23:19	14/06/2017 23:15	15/06/2017 00:30

PREVISIONE METEOROLOGICA PER LE PROSSIME ORE	LEGENDA PREVISIONE
	<ul style="list-style-type: none"> <li> Pioggia trascurabile (&lt;2 mm / 6h)</li> <li> Pioggia debole (5-10 mm / 6h)</li> <li> Pioggia moderata (10-30 mm / 6h)</li> <li> Pioggia elevata (&gt;30 mm / 6h)</li> <li> Pioggia mista a neve</li> <li> Neve</li> </ul>

Temporali in intensificazione sul bolognese, in spostamento verso la Romagna. Precipitazioni deboli-moderate sul ferrarese e deboli sulle macroaree H e F.

**PIOGGIA OSSERVATA NELLE ULTIME 6 ORE**



Il Dirigente Referente Centro Funzionale

Sandro Nanni

Firma autografa omessa ai sensi dell'art.3, c.2, D.Lgs.  
12/02/1993, n.39