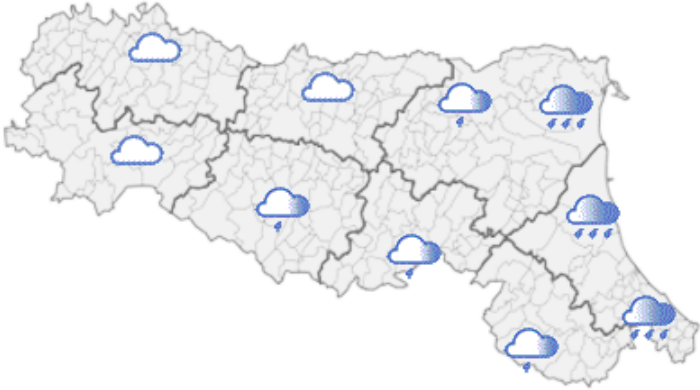






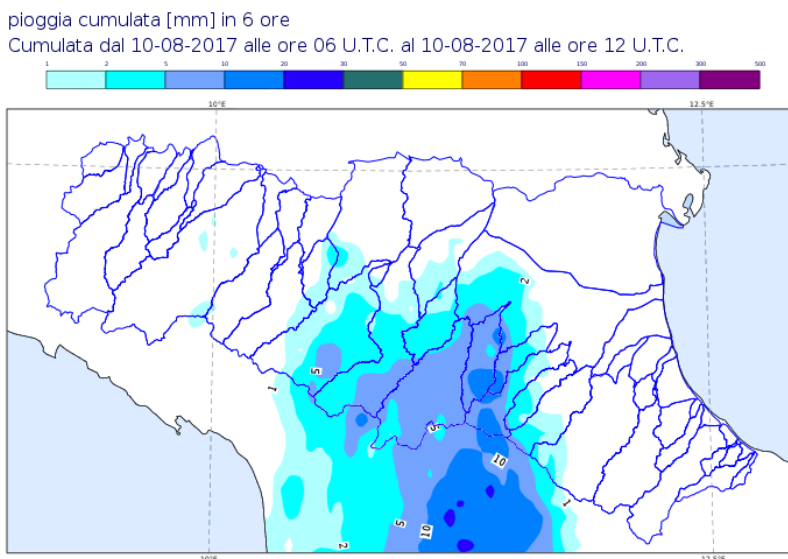


DOCUMENTO N.	DATA EMISSIONE	INIZIO VALIDITA'	FINE VALIDITA'
004/2017/03	10/08/2017 15:31	10/08/2017 15:16	10/08/2017 16:16

PREVISIONE METEOROLOGICA PER LE PROSSIME ORE	LEGENDA PREVISIONE
	<ul style="list-style-type: none"> <li> Pioggia trascurabile (&lt;2 mm / 6h)</li> <li> Pioggia debole (5-10 mm / 6h)</li> <li> Pioggia moderata (10-30 mm / 6h)</li> <li> Pioggia elevata (&gt;30 mm / 6h)</li> <li> Pioggia mista a neve</li> <li> Neve</li> </ul>

Intensa linea temporalesca sta interessando principalmente il settore costiero con associate precipitazioni a carattere di rovescio ( cumulate orarie localmente attorno a 30 mm/h). I fenomeni sono associati a raffiche e locali grandinate. Evoluzione del sistema, in spostamento nella prossima ora , sul mare verso est, nord-est.

**PIOGGIA OSSERVATA NELLE ULTIME 6 ORE**



Il Dirigente Referente Centro Funzionale

Carlo Cacciamani

Firma autografa omessa ai sensi dell'art.3, c.2, D.Lgs.  
12/02/1993, n.39